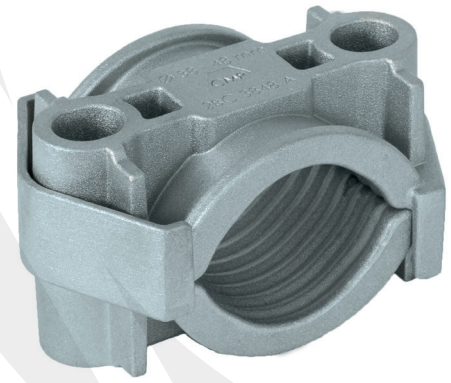


ZENITH (2BCAL)

The Zenith Two Bolt single cable cleat is a metallic cable cleat which has been designed, constructed, and tested in accordance with the International Standard 'cable cleats for Electrical Installations' (IEC 61914).

It ensures the retention and securing of single cables, without damaging or deforming the cable. The cable cleat is manufactured from high pressure die cast aluminium (LM20) making it suitable for both indoor and outdoor applications. Due to its unique twin arc internal patent pending design profile it exhibits excellent retention, limiting both the axial and lateral movement. The Zenith Two Bolt cable cleats have an excellent range take and are suitable for cable diameters of 38mm up to 151mm in only nine sizes. This cable cleat has two M12 clearance holes for securing it to a mounting surface, which allows for either M10 or M12 fasteners to be used.



TECHNICAL DATA & CLASSIFICATION

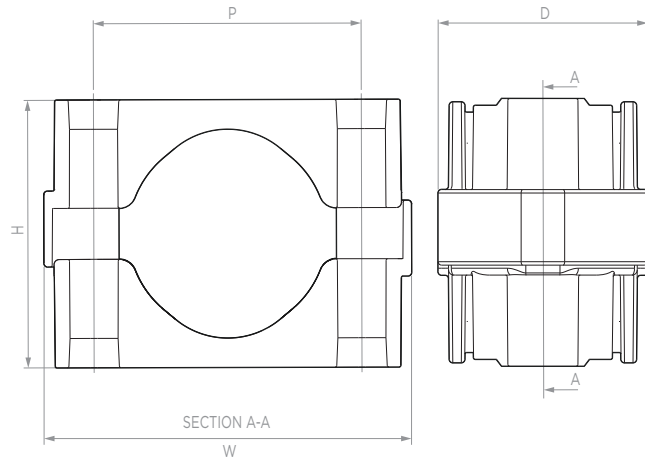
TYPE	6.1.1 Metallic 2BCAL - Two Bolt Aluminium Cable Cleat
DESIGN SPECIFICATION	IEC 61914
TEMPERATURE FOR PERMANENT APPLICATION	-60°C to 150°C IEC 61914 clause / part 6.2
NEEDLE FLAME TEST	Pass IEC 61914 clause 10.0, 10.1, IEC 60695-11-5
LATERAL LOAD TEST	18kN - 32kN, IEC 61914 clause 9.3
AXIAL LOAD TEST	8kN, IEC 61914 clause 9.4
IMPACT RESISTANCE	Pass - Very heavy IEC 61914 clause 6.3, 6.3.5, 9.2
MATERIAL	High pressure die cast aluminium
MATERIAL COLOUR	Silver / grey

SHORT CIRCUIT TESTING TO IEC 61914 - CLAUSE 9.5

MULTICORE FORMATION		PARALLEL FORMATION			
One short circuit 600mm fixed cleat centres	Two short circuits 600mm fixed cleat centres	One short circuit 600mm fixed cleat centres 105mm cable centres	Two short circuits 600mm fixed cleat centres 105mm cable centres	One short circuit 600mm fixed cleat centres 105mm cable centres	Two short circuits 600mm fixed cleat centres 105mm cable centres
0.1 sec	0.1 sec	0.1 sec	0.1 sec	1 sec	1 sec
102kA Peak	102kA Peak	130kA Peak	120kA Peak	81kA Peak	71kA Peak
48.6kA r.m.s	48.6kA r.m.s	59.0kA r.m.s	54.5kA r.m.s	36.8kA r.m.s	32.2kA r.m.s

FEATURES

- Third party certification to IEC 61914
- Available in high pressure die cast aluminium
- Sunlight (UV) & weather resistant
- Operating temperature -60°C to 150°C
- Can be double stacked
- 38 - 151mm in 9 sizes
- Excellent axial & lateral load retention
- Two bolt fixing design



CABLE CLEAT SELECTION TABLE

ZENITH PART NO.	CABLE Ø RANGE TAKE (MM)	DIMENSIONS MM					FIXING HOLE Ø	WEIGHT (g)
		W	H	D	P			
2BC038048A	38 - 48	96	68	61	67	2 x M10 / M12	250	
2BC048058A	48 - 58	107	78	61	78	2 x M10 / M12	297	
2BC058070A	58 - 70	119	91	61	90	2 x M10 / M12	357	
2BC070083A	70 - 83	133	104	61	104	2 x M10 / M12	420	
2BC083097A	83 - 97	147	118	61	118	2 x M10 / M12	484	
2BC096109A	96 - 109	160	130	61	131	2 x M10 / M12	549	
2BC106120A	106 - 120	172	142	61	143	2 x M10 / M12	616	
2BC120135A	120 - 135	187	157	61	158	2 x M10 / M12	693	
2BC135151A	135 - 151	201	174	61	172	2 x M10 / M12	768	